

Quick Start Guide



StealthSwitch AT Affordable Assistive Technology

StealthSwitch AT Product Features

- ✓ Configuration Software for PC and Mac OSX
- ✓ Support for 5 or 10 Industry standard 1/8" (3.5mm) mini plugs
- ✓ Easy intuitive configuration
- ✓ Includes RoboCon for automatic per application configuration
- ✓ Once programmed, no software is required
- ✓ All settings stored in switch interface
- ✓ Supports keystrokes, mouse clicks, macros, hotkeys, drag lock
- ✓ Works with virtually any MAC or PC software that supports mouse or keystroke control
- ✓ Shift mode effectively doubles the number of switches
- ✓ Ability to save an unlimited number of configurations
- ✓ Easily move from computer to computer without software



StealthSwitch AT Hardware Installation



The StealthSwitch AT can be plugged into any USB port or hub on your PC or Macintosh computer.

1. Connect one end of the included 6' USB cable into the port on the switch interface.
2. Connect the other end of the USB cable into the USB port of your computer or hub.

Notes:

- Macintosh – The first time you plug the StealthSwitch AT into your computer the Keyboard Setup Assistant window will open with a message that your keyboard cannot be identified. Simply close this window by clicking on the red X at the top left and your StealthSwitch AT hardware installation is complete.
- PC – The first time you plug the StealthSwitch AT into your computer, the Found New Hardware window will open in the system tray. You will receive a message when the installation is complete that says "Your new hardware is installed and ready to use".

StealthSwitch AT Software Installation

Installation – PC

When you insert the PC/MAC hybrid installation CD into your CDROM drive a menu will automatically start. Simply select the product that you want to install and follow the directions.

Installation – Macintosh

When you insert the PC/MAC hybrid installation CD into you CDROM drive, a window will open with an installer icon named “StealthSwitch AT Installer.mpkg”. Double click on the icon to install the StealthSwitch AT software.

RoboCon Software Installation

Installation – PC

Select the RoboCon software version from the menu on the installation CD to install.

Notes:

- The Microsoft .NET Framework Version 2.0 is required for RoboCon.
- **Important:** Make sure you have the latest service pack and critical updates for the version of Windows that you are running. To find recent security updates, visit Windows Update at <http://windowsupdate.microsoft.com>

Installation - Macintosh

The RoboCon software was automatically installed when you installed the StealthSwitch AT software.

Note:

- More information regarding using the RoboCon software is included in the help files.

Using the StealthSwitch AT for the First Time

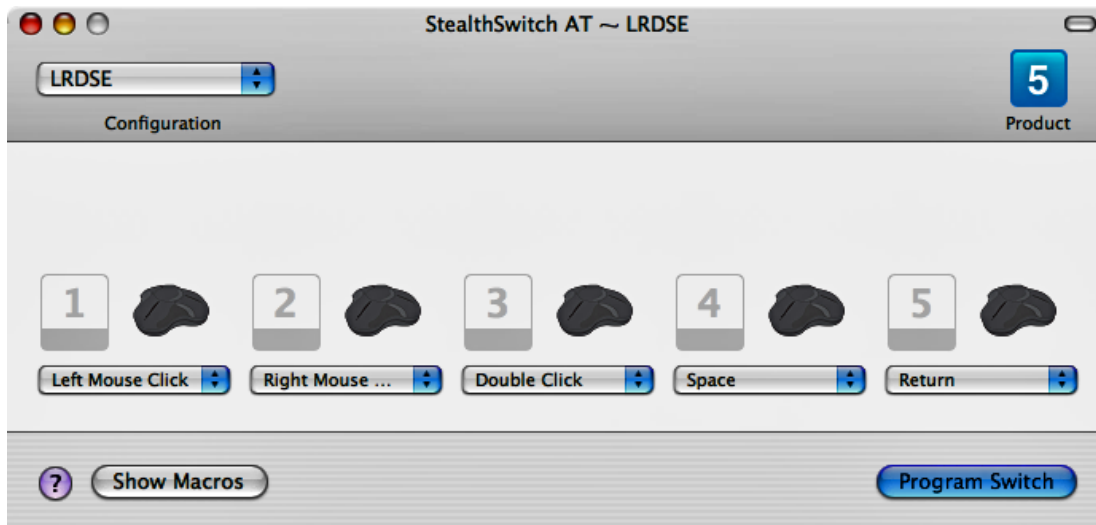
The StealthSwitch AT is preconfigured at the factory with the following settings.

Switch 1	Left mouse click
Switch 2	Right mouse click
Switch 3	Double click
Switch 4	Space
Switch 5	Enter

To use, simply plug any standard 1/8" (3.5mm) switch into the corresponding jack.



Programming for the Macintosh

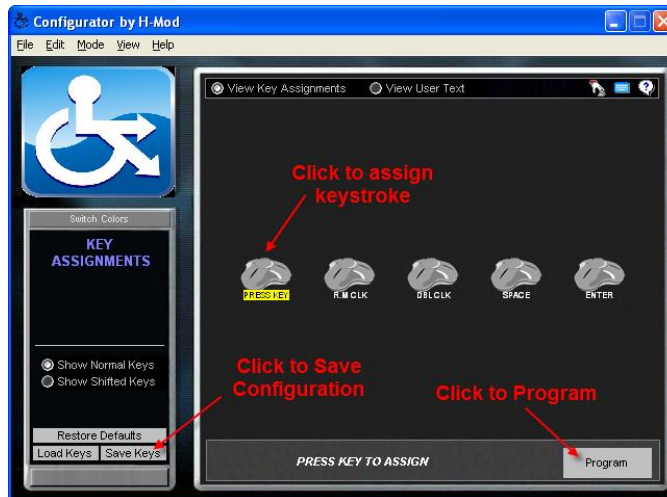


1. Open the StealthSwitch AT application
2. Click on the “Product” at the top right to select either 5 switches or 10 switches.
3. Click “Configuration – New” and choose a name.
4. Click the keystroke or mouse function from the dropdown of each switch that you want to configure.
5. Click on “Program Switch” to program your new configuration.

Notes:

- After programming, the software is no longer required and all settings are stored in the switch interface. It can even be unplugged and moved to another computer.
- Click on “Help” for more features and information.

Programming for the PC



1. Open the StealthSwitch AT Configurator program.
2. Click on each switch that you want to program and either press the key on the keyboard or right click and select from the list.
3. Click on the “Program” button to send the program to the StealthSwitch AT.
4. To save your settings, click on the “Save Keys”, type in a filename and save in the “Templates” folder.
5. To load a previously saved configuration, click on the “Load Keys” button and select a configuration from the list. Don’t forget to press the “Program” button to send to the StealthSwitch AT.

Notes:

- After programming, the software is no longer required and all settings are stored in the switch interface. It can even be unplugged and moved to another computer.
- Click on “Help” for more features and information.

Technical Support

support@StealthSwitchAT.com

Web

www.StealthSwitchAT.com

Lifetime Warranty

The StealthSwitch AT is warranted to be free from defects in materials or workmanship forever. Within this period, H-Mod, Inc. will at its sole option, repair or replace any components that fail in normal use. Such repairs or replacement will be made at no charge to the customer for parts or labor, provided that the customer shall be responsible for any transportation cost. This warranty does not cover failures due to abuse, misuse, accident or unauthorized alteration or repairs.

The warranties and remedies contained herein are exclusive and in lieu of all other warranties express or implied or statutory, including any liability arising under any warranty or merchantability or fitness for a particular purpose, statutory or otherwise. In no event shall H-Mod, Inc.'s liability exceed the price paid for the product from direct, indirect, special, incidental, or consequential damages resulting from the use of the product, its accompanying software, or its documentation. This warranty gives you specific legal rights, which may vary from state to state. H-Mod, Inc. retains the exclusive right to repair or replace the unit or software or offer a full refund of the purchase price at its sole discretion. Such remedy shall be your sole and exclusive remedy for any breach of warranty.

To obtain warranty service, email H-Mod, Inc. at support@stealthswitchat.com for shipping instructions and an RMA tracking number.



FCC Compliance

This device complies with Part 15 of the FCC Rules. Operation is subject to the following two conditions: (1) this device may not cause harmful interference, and (2) this device must accept any interference received, including interference that may cause undesired operation. Tested to comply with FCC standards. For home and office use.

©2008 H-Mod, Inc.

All rights reserved. StealthSwitch AT™, the StealthSwitch AT™ logo, and other StealthSwitch AT™ marks are owned by H-Mod, Inc. and may be registered. All other trademarks are the property of their respective owners. H-Mod, Inc. assumes no responsibility for any errors that may appear in the manual. Information contained herein is subject to change without notice.